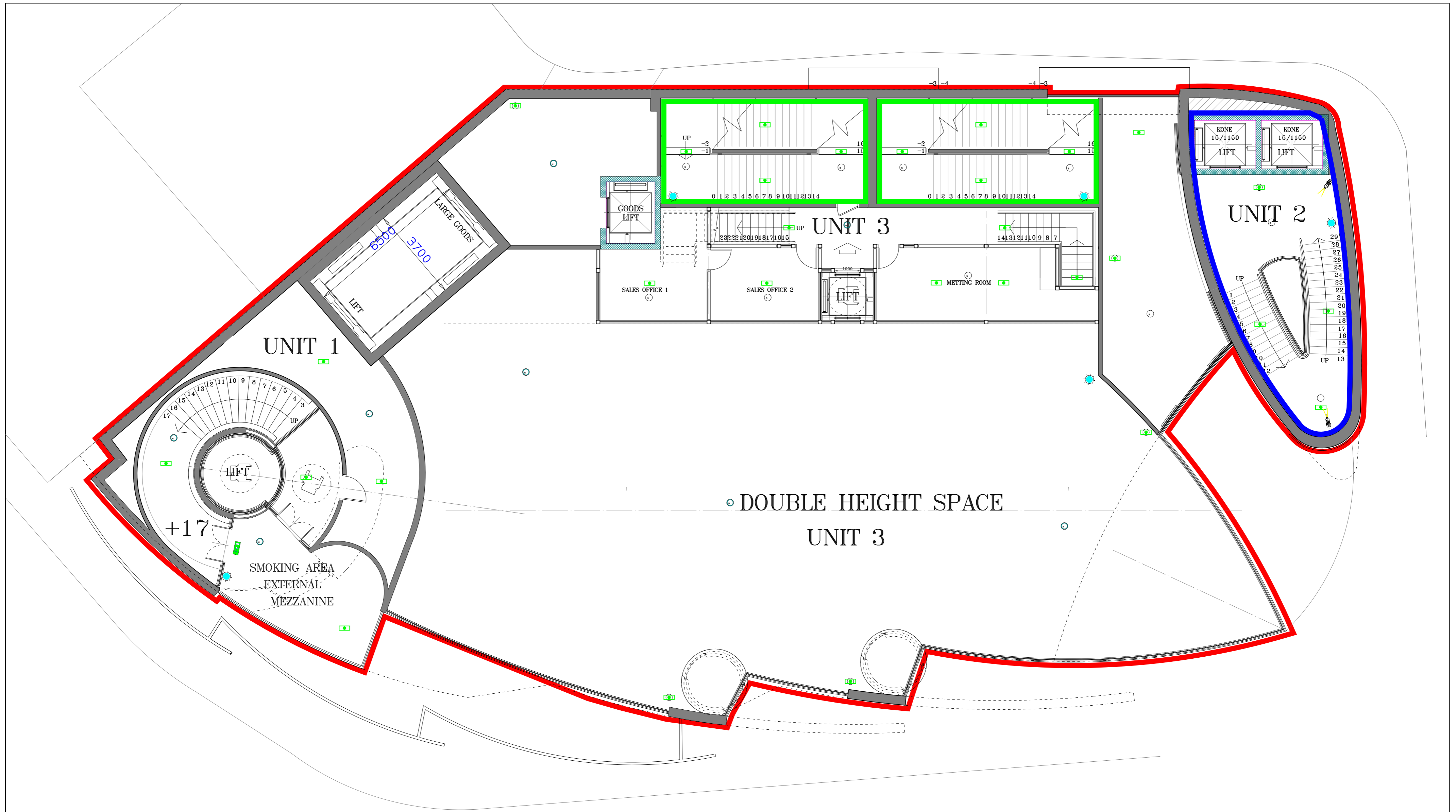


GROUND FLOOR

<p>FIRE SAFETY FIRE DETECTION, ALARMS, EXIT SIGNS, MAINTAINED AND NON-MAINTAINED EMERGENCY LIGHTING TO BE INSTALLED IN ACCORDANCE WITH PREMISES LICENSING AND FIRE SAFETY OFFICER'S APPROVAL. GLAZING AND VISION PANELS TO FIRE RATED PARTITIONS AND DOORS TO BE PYROBELL OR SIMILAR TO COMPLY WITH REQUIRED FIRE RATING.</p> <p>FIRE EXTINGUISHERS FIRE EXTINGUISHERS AS FOLLOWS TO BE INSTALLED IN ACCORDANCE WITH PREMISES LICENSING AND FIRE OFFICERS APPROVAL AND MAINTAINED, INSPECTED AND TESTED IN ACCORDANCE WITH BRITISH STANDARDS CODE OF PRACTICE.</p> <p>FIRE NOTICES GENERAL BY EACH CALL POINT STAFF KITCHEN DUTY MANAGER</p>	<p>FIRE EQUIPMENT</p> <ul style="list-style-type: none"> 6kg MULTI-PURPOSE FOAM EXTINGUISHER FIRE BLANKET 2kg CARBON DIOXIDE EXTINGUISHER AQUARIUS FOAM FILLED 6 ltr MULTI-PURPOSE WATER EXTINGUISHER 	<p>EMERGENCY LIGHTING</p> <ul style="list-style-type: none"> EMERGENCY LIGHT 240V N/A3 BULBHEAD LIGHT BOH REF AC5000 PUBLIC AREA COMBINE 28 WATT 2D DECORATIVE FITTING EMERGENCY SIGN 240V M3 BOH REF AC5004 PUBLIC AREA AC5019 EMERGENCY / CLEANERS LIGHT 240V N/A3 IP20 TWIN SPOT WITH MULTI DIRECTIONAL HEADS REF AC5007 	<p>FIRE ALARM</p> <ul style="list-style-type: none"> VOID DETECTOR SMOKE DETECTOR HEAT DETECTOR MANUAL CALL POINT FIRST STAGE SOUNDER FLASHING BEACON FIRE ALARM PANEL FIRE ALARM REPEATER PANEL DISABLE REFUGE INTERCOM POINT 	<p>GENERAL KEY</p> <ul style="list-style-type: none"> ATM BANK MACHINE MOBILE EXTERNAL HEATER CURTAIN TEMPORARY PARTITION FIXED SHELVING BAR COUNTERS AND BACKFITTINGS REMOVABLE SCREEN CCTV CAMERA LOCATION 	<p>AREA BOUNDED BY THE RED LINE INDICATES THE BOUNDARY OF THE BUILDING</p> <p>AREA BOUNDED BY THE BLUE LINE INDICATES THE PERIMETER OF THE PREMISES</p> <p>THE BLUE HATCHED AREA INDICATES THE AREA WHERE PRIVATE SCREENED PERFORMANCES TAKE PLACE</p>	<p>AREA BOUNDED BY THE GREEN LINE INDICATES THE PROVISION OF FIRE ESCAPE</p> <p>AREA BOUNDED BY THE YELLOW LINE INDICATES THE AREA WHERE PERFORMANCES TAKE PLACE</p>	<p>Easy Design Solutions EDS Studio 48 Bachelor Road Harrogate HG1 3EQ grt@easy-designs.co.uk mob: 07903730044</p>	<p>Client: STAR OYSTER Project: THE QUADRANT RE-DEVELOPMENT Title: UNIT 2 LICENSING PLAN GROUND FLOOR</p> <p>Drawn by: GRT Checked by: GRT Date: MAY-15 Scale: 1:100@A2</p> <p>Project No: Q13-U2-510C</p>
---	---	---	--	---	--	--	--	--



GROUND FLOOR MEZZANINE

FIRE SAFETY

FIRE DETECTION, ALARMS, EXIT SIGNS, MAINTAINED AND NON-MAINTAINED EMERGENCY LIGHTING TO BE INSTALLED IN ACCORDANCE WITH PREMISES LICENSING AND FIRE SAFETY OFFICERS APPROVAL

GLAZING AND VISION PANELS TO FIRE RATED PARTITIONS AND DOORS TO BE PYROBELL OR SIMILAR TO COMPLY WITH REQUIRED FIRE RATING

FIRE EXTINGUISHERS

FIRE EXTINGUISHERS AS FOLLOWS TO BE INSTALLED IN ACCORDANCE WITH PREMISES LICENSING AND FIRE OFFICERS APPROVAL AND MAINTAINED, INSPECTED AND TESTED IN ACCORDANCE WITH BRITISH STANDARDS CODE OF PRACTICE

WATER EXTINGUISHERS (HYDROSPRAY)
FOAM EXTINGUISHERS
CARBON DIOXIDE EXTINGUISHERS
FIRE BLANKET
POWDER (DRY CHEMICAL) EXTINGUISHERS
DOC GASGUARD
GAS SHUT OFF

FIRE EQUIPMENT

- 6kg MULTI-PURPOSE FOAM EXTINGUISHER
- FIRE BLANKET
- 2kg CARBON DIOXIDE EXTINGUISHER
- AQUARIUS FOAM FILLED
- 6 litr MULTI-PURPOSE WATER EXTINGUISHER

FIRE NOTICES

- GENERAL BY EACH CALL POINT
- STAFF
- KITCHEN
- DUTY MANAGER

EMERGENCY LIGHTING

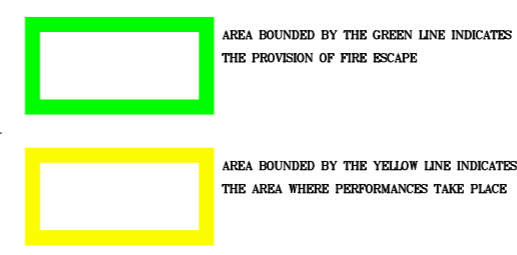
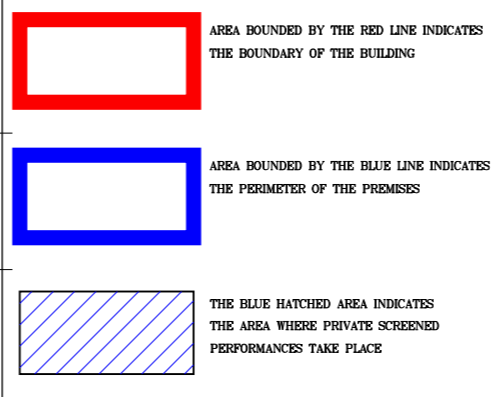
- EMERGENCY LIGHT 240V N/A3 BULKHEAD LIGHT BOH REF AC5000 PUBLIC AREA COMBINE 28 WATT 2D DECORATIVE FITTING
- EMERGENCY SIGN 240V M3
- BOH REF AC5004 PUBLIC AREA AC5019
- EMERGENCY / CLEANERS LIGHT 240V N/A3 IP20 TWIN SPOT WITH MULTI DIRECTIONAL HEADS REF AC5007

FIRE ALARM

- VOID DETECTOR
- SMOKE DETECTOR
- HEAT DETECTOR
- MANUAL CALL POINT
- FIRST STAGE SOUNDER
- FLASHING BEACON
- FIRE ALARM PANEL
- FIRE ALARM REPEATER PANEL
- DISABLE REFUGE INTERCOM POINT

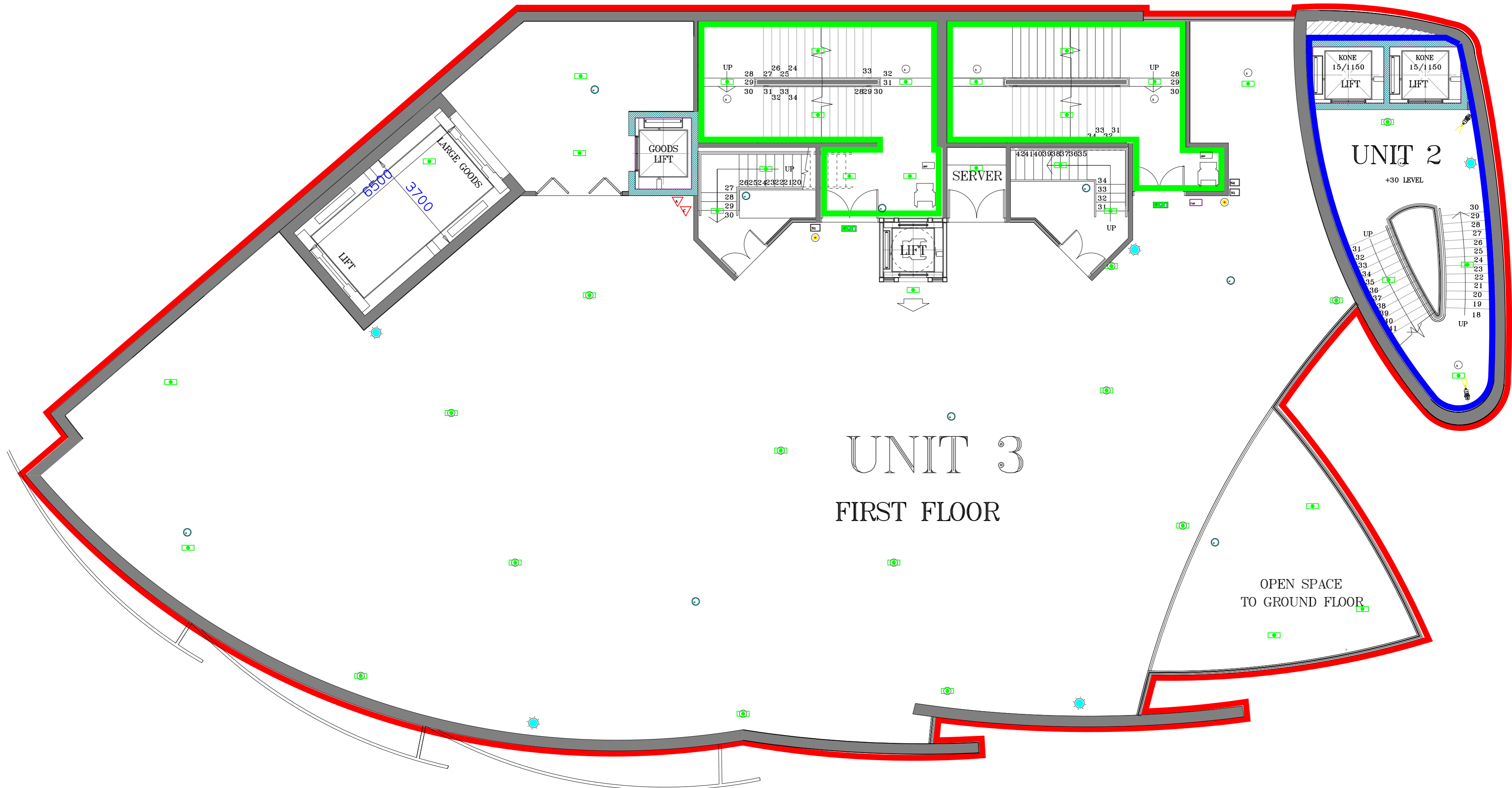
GENERAL KEY

- ATM BANK MACHINE
- MOBILE EXTERNAL HEATER
- CURTAIN
- TEMPORARY PARTITION
- FIXED SHELVING
- BAR COUNTERS AND BACKFITTINGS
- REMOVABLE SCREEN
- CCTV CAMERA LOCATION



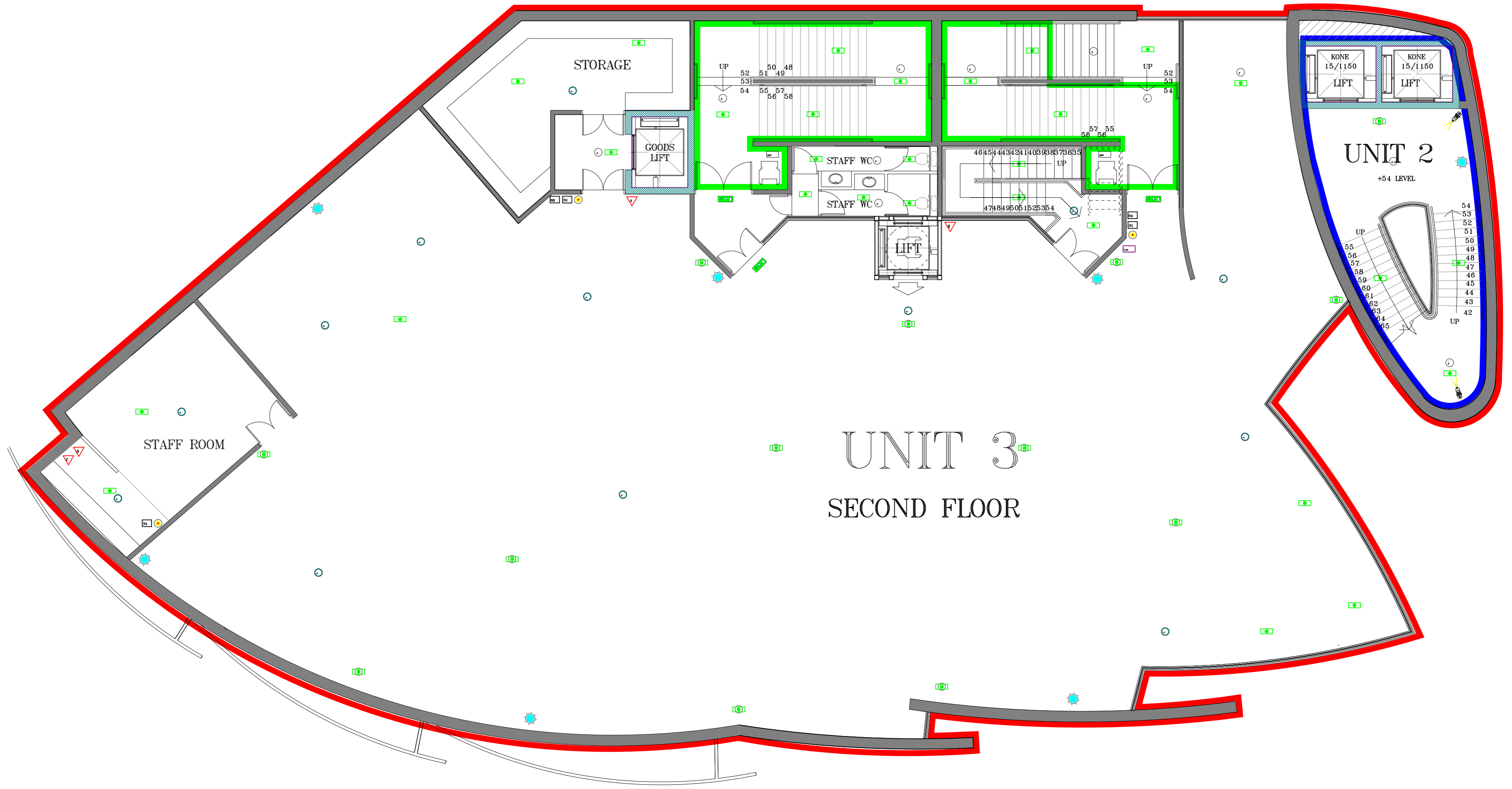
Easy Design Solutions Studio
EDS 48
 Bachelor Road
 Harrogate
 HG1 3EQ
 grt@easy-designs.co.uk
 mob: 07903730044

Client: **STAR OYSTER**
 Project: **THE QUADRANT RE-DEVELOPMENT**
 Title: **UNIT 2 LICENSING PLAN**
GROUND FLOOR MEZZANINE
 Drawn by: GRT Checked by: GRT Date: **MAY-15**
 Drawing no: **Q13-U2-511C**
 Scale: **1:100@A2**



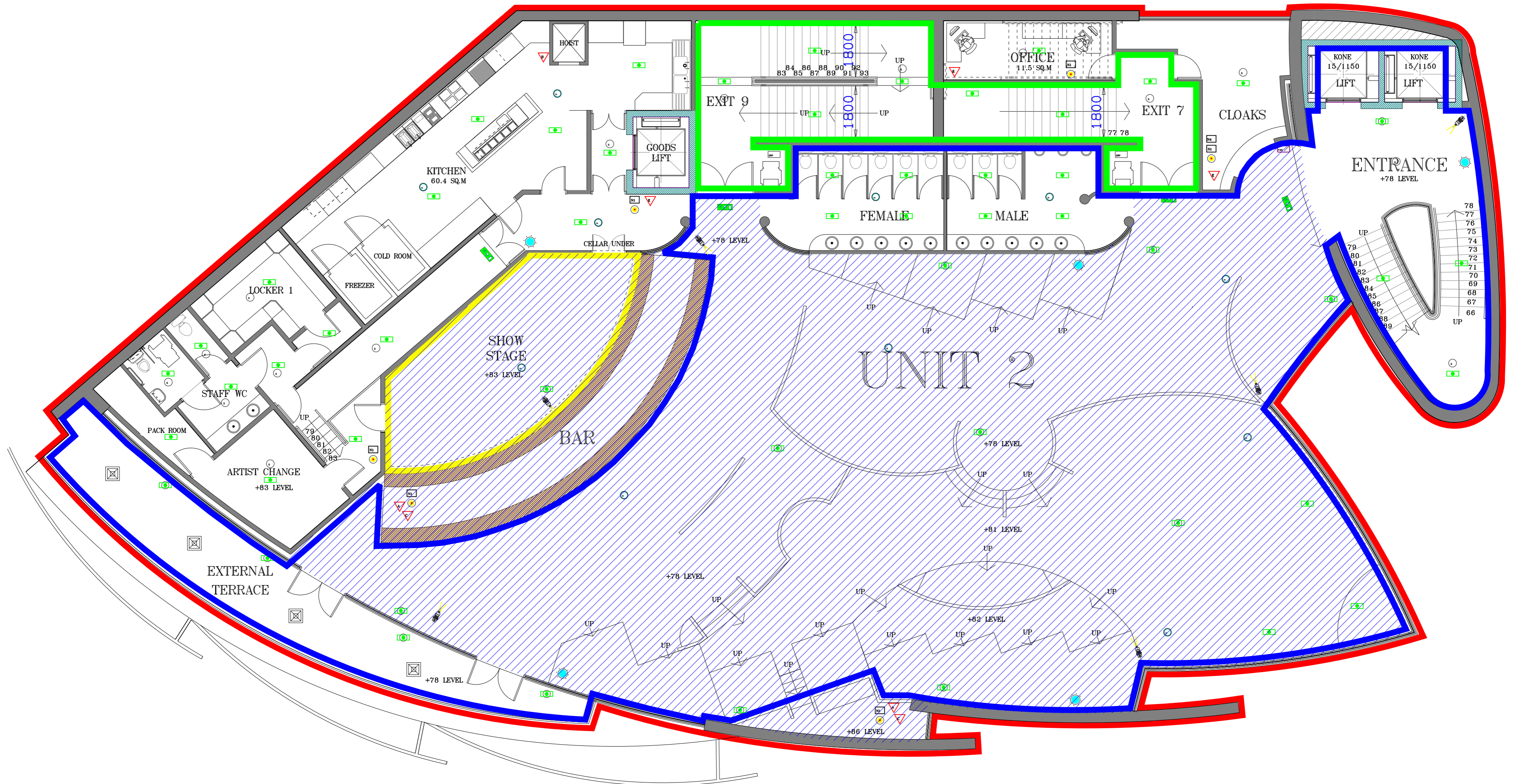
1st FLOOR

<p>FIRE SAFETY FIRE DETECTION, ALARMS, EXIT SIGNS, MAINTAINED AND NON-MAINTAINED EMERGENCY LIGHTING TO BE INSTALLED IN ACCORDANCE WITH PREMISES LICENSING AND FIRE SAFETY OFFICERS APPROVAL GLAZING AND VISION PANELS TO FIRE RATED PARTITIONS AND DOORS TO BE PYROBELL OR SIMILAR TO COMPLY WITH REQUIRED FIRE RATING</p> <p>FIRE EXTINGUISHERS FIRE EXTINGUISHERS AS FOLLOWS TO BE INSTALLED IN ACCORDANCE WITH PREMISES LICENSING AND FIRE OFFICERS APPROVAL AND MAINTAINED, INSPECTED AND TESTED IN ACCORDANCE WITH BRITISH STANDARDS CODE OF PRACTICE WATER EXTINGUISHERS (HYDROSPRAY) FOAM EXTINGUISHERS CARBON DIOXIDE EXTINGUISHERS FIRE BLANKET POWDER (DRY CHEMICAL) EXTINGUISHERS DOC GASGUARD GAS SHUT OFF</p>	<p>FIRE EQUIPMENT</p> <ul style="list-style-type: none"> ▽ 6kg MULTI-PURPOSE FOAM EXTINGUISHER ▽ FIRE BLANKET ▽ 2kg CARBON DIOXIDE EXTINGUISHER ▽ AQUAFIX FOAM FILLED ▽ 6 ltr MULTI-PURPOSE WATER EXTINGUISHER <p>FIRE NOTICES</p> <ul style="list-style-type: none"> □ GENERAL BY EACH CALL POINT □ STAFF □ KITCHEN □ DUTY MANAGER 	<p>EMERGENCY LIGHTING</p> <ul style="list-style-type: none"> □ EMERGENCY LIGHT 240V N/A3 BULKHEAD LIGHT BOH REF AC5000 PUBLIC AREA COMBINE 28 WATT 2D DECORATIVE FITTING □ EMERGENCY SIGN 240V M3 □ BOH REF AC5004 PUBLIC AREA AC5019 □ EMERGENCY / CLEANERS LIGHT 240V N/A3 IP20 TWIN SPOT WITH MULTI DIRECTIONAL HEADS REF AC5007 	<p>FIRE ALARM</p> <ul style="list-style-type: none"> ○ VOID DETECTOR ○ SMOKE DETECTOR ○ HEAT DETECTOR ○ MANUAL CALL POINT ○ FIRST STAGE SOUNDER ○ FLASHING BEACON ○ FIRE ALARM PANEL ○ FIRE ALARM REPEATER PANEL ○ DISABLE REFUGE INTERCOM POINT 	<p>GENERAL KEY</p> <ul style="list-style-type: none"> ATM BANK MACHINE MOBILE EXTERNAL HEATER CURTAIN TEMPORARY PARTITION FIXED SHELVING BAR COUNTERS AND BACKFITTINGS REMOVABLE SCREEN CCTV CAMERA LOCATION 	<p>AREA BOUNDED BY THE RED LINE INDICATES THE BOUNDARY OF THE BUILDING</p> <p>AREA BOUNDED BY THE BLUE LINE INDICATES THE PERIMETER OF THE PREMISES</p> <p>THE BLUE HATCHED AREA INDICATES THE AREA WHERE PRIVATE SCREENED PERFORMANCES TAKE PLACE</p>	<p>AREA BOUNDED BY THE GREEN LINE INDICATES THE PROVISION OF FIRE ESCAPE</p> <p>AREA BOUNDED BY THE YELLOW LINE INDICATES THE AREA WHERE PERFORMANCES TAKE PLACE</p>	<p>Easy Design Solutions Studio EDS 48 Bachelor Road Harrogate HG1 3EQ grt@easy-designs.co.uk mob: 07903730044</p>	<p>Client: STAR OYSTER Project: THE QUADRANT RE=DEVELOPMENT Title: UNIT 2 LICENSING PLAN 1st FLOOR</p> <p>Drawn by: GRT Checked by: GRT Date: MAY-15 Scale: 1:100@A2</p> <p>Project No: Q13-U2-512C</p>
--	--	--	--	---	--	--	--	---



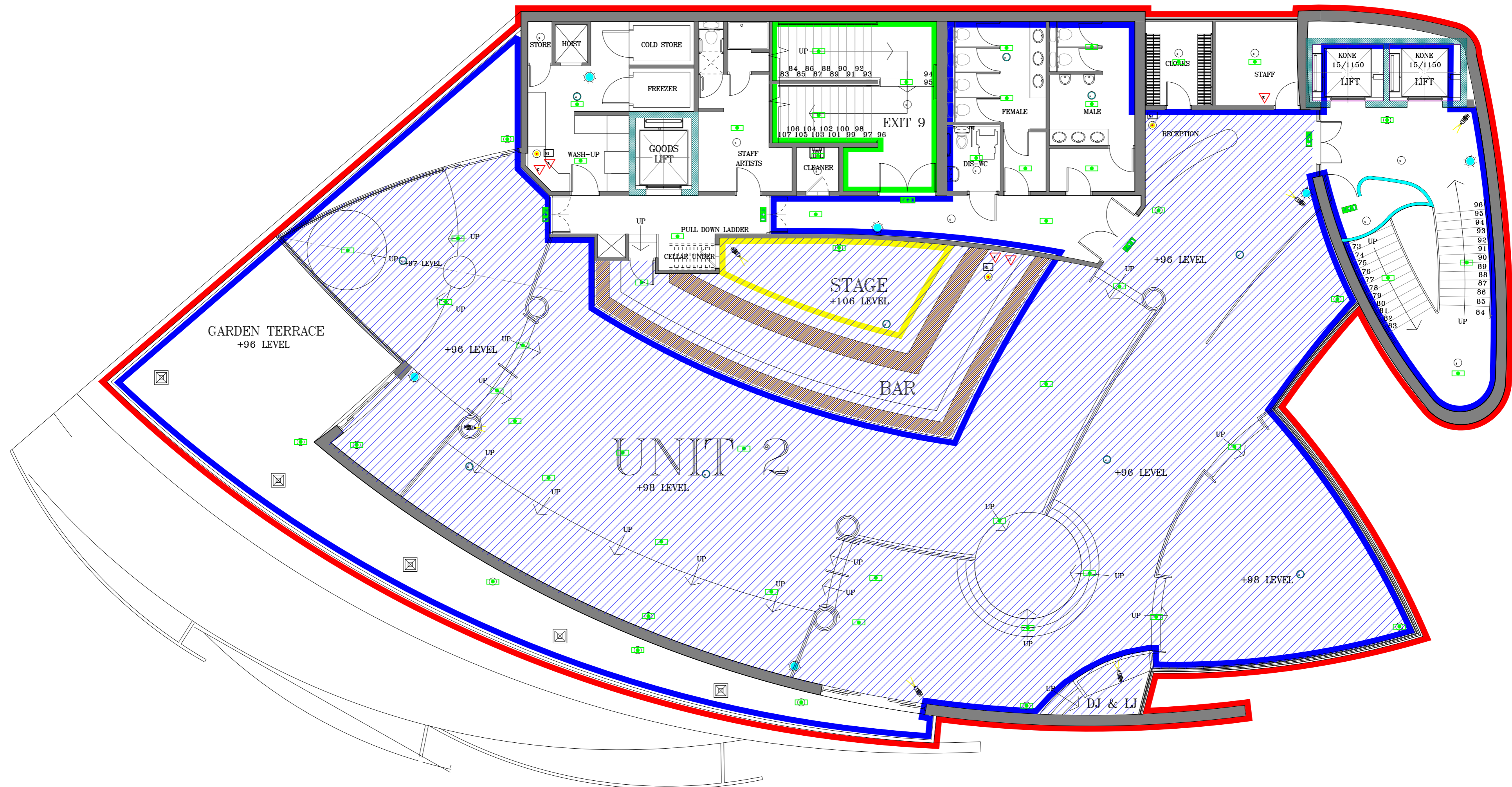
2nd FLOOR

<p>FIRE SAFETY FIRE DETECTION, ALARMS, EXIT SIGNS, MAINTAINED AND NON-MAINTAINED EMERGENCY LIGHTING TO BE INSTALLED IN ACCORDANCE WITH PREMISES LICENSING AND FIRE SAFETY OFFICERS APPROVAL GLAZING AND VISION PANELS TO FIRE RATED PARTITIONS AND DOORS TO BE PYROBELL OR SIMILAR TO COMPLY WITH REQUIRED FIRE RATING</p> <p>FIRE EXTINGUISHERS FIRE EXTINGUISHERS AS FOLLOWS TO BE INSTALLED IN ACCORDANCE WITH PREMISES LICENSING AND FIRE OFFICERS APPROVAL AND MAINTAINED, INSPECTED AND TESTED IN ACCORDANCE WITH BRITISH STANDARDS CODE OF PRACTICE WATER EXTINGUISHERS (HYDROSPRAY) FOAM EXTINGUISHERS CARBON DIOXIDE EXTINGUISHERS FIRE BLANKET POWDER (DRY CHEMICAL) EXTINGUISHERS DOC GASGUARD GAS SHUT OFF</p>	<p>FIRE EQUIPMENT</p> <ul style="list-style-type: none"> 6kg MULTI-PURPOSE FOAM EXTINGUISHER FIRE BLANKET 2kg CARBON DIOXIDE EXTINGUISHER AQUAFIX FOAM FILLED 6 ltr MULTI-PURPOSE WATER EXTINGUISHER <p>FIRE NOTICES</p> <ul style="list-style-type: none"> GENERAL BY EACH CALL POINT STAFF KITCHEN DUTY MANAGER 	<p>EMERGENCY LIGHTING</p> <ul style="list-style-type: none"> EMERGENCY LIGHT 240V N/A3 BULBHEAD LIGHT BOH REF AC5000 PUBLIC AREA COMBINE 28 WATT 2D DECORATIVE FITTING EMERGENCY SIGN 240V M3 BOH REF AC5004 PUBLIC AREA AC5019 EMERGENCY / CLEANERS LIGHT 240V N/A3 IP20 TWIN SPOT WITH MULTI DIRECTIONAL HEADS REF AC5007 	<p>FIRE ALARM</p> <ul style="list-style-type: none"> VOID DETECTOR SMOKE DETECTOR HEAT DETECTOR MANUAL CALL POINT FIRST STAGE SOUNDER FLASHING BEACON FIRE ALARM PANEL FIRE ALARM REPEATER PANEL DISABLE REFUGE INTERCOM POINT 	<p>GENERAL KEY</p> <ul style="list-style-type: none"> ATM BANK MACHINE MOBILE EXTERNAL HEATER CURTAIN TEMPORARY PARTITION FIXED SHELVING BAR COUNTERS AND BACKFITTINGS REMOVABLE SCREEN CCTV CAMERA LOCATION 	<p>AREA BOUNDED BY THE RED LINE INDICATES THE BOUNDARY OF THE BUILDING</p> <p>AREA BOUNDED BY THE BLUE LINE INDICATES THE PERIMETER OF THE PREMISES</p> <p>THE BLUE HATCHED AREA INDICATES THE AREA WHERE PRIVATE SCREENED PERFORMANCES TAKE PLACE</p>	<p>AREA BOUNDED BY THE GREEN LINE INDICATES THE PROVISION OF FIRE ESCAPE</p> <p>AREA BOUNDED BY THE YELLOW LINE INDICATES THE AREA WHERE PERFORMANCES TAKE PLACE</p>	<p>Easy Design Solutions Studio EDS 48 Bachelor Road Harrogate HG1 3EQ grt@easy-designs.co.uk mob: 07903730044</p>	<p>Client: STAR OYSTER Project: THE QUADRANT RE=DEVELOPMENT Title: UNIT 2 LICENSING PLAN 2nd FLOOR</p> <p>Drawn by: GRT Checked by: GRT Date: MAY-15 Scale: 1:100@A2</p> <p>Dwelling: GUILDFORD Brig Name: EDS Proj. No: ARKEY Ingenr: Q13-U2-513C</p>
--	--	--	--	---	--	--	--	--



3rd FLOOR

<p>FIRE SAFETY FIRE DETECTION, ALARMS, EXIT SIGNS, MAINTAINED AND NON-MAINTAINED EMERGENCY LIGHTING TO BE INSTALLED IN ACCORDANCE WITH PREMISES LICENSING AND FIRE SAFETY OFFICERS APPROVAL GLAZING AND VISION PANELS TO FIRE RATED PARTITIONS AND DOORS TO BE PYROBELL OR SIMILAR TO COMPLY WITH REQUIRED FIRE RATING</p> <p>FIRE EXTINGUISHERS FIRE EXTINGUISHERS AS FOLLOWS TO BE INSTALLED IN ACCORDANCE WITH PREMISES LICENSING AND FIRE OFFICERS APPROVAL AND MAINTAINED, INSPECTED AND TESTED IN ACCORDANCE WITH BRITISH STANDARDS CODE OF PRACTICE WATER EXTINGUISHERS (HYDROSPRAY) FOAM EXTINGUISHERS CARBON DIOXIDE EXTINGUISHERS FIRE BLANKET POWDER (DRY CHEMICAL) EXTINGUISHERS BOC GASGUARD GAS SHUT OFF</p>	<p>FIRE EQUIPMENT</p> <ul style="list-style-type: none"> 6kg MULTI-PURPOSE FOAM EXTINGUISHER FIRE BLANKET 2kg CARBON DIOXIDE EXTINGUISHER AQUARIUS FOAM FILLED 6 lit MULTI-PURPOSE WATER EXTINGUISHER <p>FIRE NOTICES</p> <ul style="list-style-type: none"> GENERAL BY EACH CALL POINT STAFF KITCHEN DUTY MANAGER 	<p>EMERGENCY LIGHTING</p> <ul style="list-style-type: none"> EMERGENCY LIGHT 240V N/A3 BULBHEAD LIGHT BOH REF AC5000 PUBLIC AREA COMBINE 28 WATT 2D DECORATIVE FITTING EMERGENCY SIGN 240V M3 BOH REF AC5004 PUBLIC AREA AC5019 EMERGENCY / CLEANERS LIGHT 240V N/A3 IP20 TWIN SPOT WITH MULTI DIRECTIONAL HEADS REF AC5007 	<p>FIRE ALARM</p> <ul style="list-style-type: none"> VOID DETECTOR SMOKE DETECTOR HEAT DETECTOR MANUAL CALL POINT FIRST STAGE SOUNDER FLASHING BEACON FIRE ALARM PANEL FIRE ALARM REPEATER PANEL DISABLE REFUGE INTERCOM POINT 	<p>GENERAL KEY</p> <ul style="list-style-type: none"> ATM BANK MACHINE MOBILE EXTERNAL HEATER CURTAIN TEMPORARY PARTITION FIXED SHELVING BAR COUNTERS AND BACKFITTINGS REMOVABLE SCREEN CCTV CAMERA LOCATION 	<p>AREA BOUNDED BY THE RED LINE INDICATES THE BOUNDARY OF THE BUILDING</p> <p>AREA BOUNDED BY THE BLUE LINE INDICATES THE PERIMETER OF THE PREMISES</p> <p>THE BLUE HATCHED AREA INDICATES THE AREA WHERE PRIVATE SCREENED PERFORMANCES TAKE PLACE</p>	<p>AREA BOUNDED BY THE GREEN LINE INDICATES THE PROVISION OF FIRE ESCAPE</p> <p>AREA BOUNDED BY THE YELLOW LINE INDICATES THE AREA WHERE PERFORMANCES TAKE PLACE</p>	<p>Easy Design Solutions Studio EDS 48 Bachelor Road Harrogate HG1 3EQ grt@easy-designs.co.uk mob: 07903730044</p>	<p>Client: STAR OYSTER</p> <p>Project: THE QUADRANT RE-DEVELOPMENT</p> <p>Title: UNIT 2 LICENSING PLAN</p> <p>3rd FLOOR</p> <p>Drawn by: GRT Checked by: GRT Date: MAY-15</p> <p>Director: GUILDFORD Drawing no: Scale: 1:100@A2</p> <p>Proj. No: EDS</p> <p>Project: ARKEY</p> <p>Ref: Q13-U2-514C</p>
--	---	--	--	---	--	--	--	--



4th FLOOR

FIRE SAFETY
 FIRE DETECTION, ALARMS, EXIT SIGNS, MAINTAINED AND NON-MAINTAINED EMERGENCY LIGHTING TO BE INSTALLED IN ACCORDANCE WITH PREMISES LICENSING AND FIRE SAFETY OFFICERS APPROVAL
 GLAZING AND VISION PANELS TO FIRE RATED PARTITIONS AND DOORS TO BE PYROBELL OR SIMILAR TO COMPLY WITH REQUIRED FIRE RATING

FIRE EXTINGUISHERS
 FIRE EXTINGUISHERS AS FOLLOWS TO BE INSTALLED IN ACCORDANCE WITH PREMISES LICENSING AND FIRE OFFICERS APPROVAL AND MAINTAINED, INSPECTED AND TESTED IN ACCORDANCE WITH BRITISH STANDARDS CODE OF PRACTICE
 WATER EXTINGUISHERS (HYDROSPRAY)
 FOAM EXTINGUISHERS
 CARBON DIOXIDE EXTINGUISHERS
 FIRE BLANKET
 POWDER (DRY CHEMICAL) EXTINGUISHERS
 DOC GASGUARD
 GAS SHUT OFF

FIRE EQUIPMENT

- ▽ 6kg MULTI-PURPOSE FOAM EXTINGUISHER
- ▽ FIRE BLANKET
- ▽ 2kg CARBON DIOXIDE EXTINGUISHER
- ▽ AQUARIUS FOAM FILLED
- ▽ 6 ltr MULTI-PURPOSE WATER EXTINGUISHER

FIRE NOTICES

- GENERAL BY EACH CALL POINT
- STAFF
- KITCHEN
- DUTY MANAGER

EMERGENCY LIGHTING

- EMERGENCY LIGHT 240V N/A3 BULBHEAD LIGHT BOH REF AC5000 PUBLIC AREA COMBINE 28 WATT 2D DECORATIVE FITTING
- EMERGENCY SIGN 240V M3
- BOH REF AC5004 PUBLIC AREA AC5019
- EMERGENCY / CLEANERS LIGHT 240V N/A3 IP20 TWIN SPOT WITH MULTI DIRECTIONAL HEADS REF AC5007

FIRE ALARM

- VOID DETECTOR
- SMOKE DETECTOR
- HEAT DETECTOR
- MANUAL CALL POINT
- FIRST STAGE SOUNDER
- FLASHING BEACON
- FIRE ALARM PANEL
- FIRE ALARM REPEATER PANEL
- DISABLE REFUGE INTERCOM POINT

GENERAL KEY

- ATM BANK MACHINE
- MOBILE EXTERNAL HEATER
- CURTAIN
- TEMPORARY PARTITION
- FIXED SHELVING
- BAR COUNTERS AND BACKFITTINGS
- REMOVABLE SCREEN
- CCTV CAMERA LOCATION

AREA BOUNDED BY THE RED LINE INDICATES THE BOUNDARY OF THE BUILDING

AREA BOUNDED BY THE BLUE LINE INDICATES THE PERIMETER OF THE PREMISES

THE BLUE HATCHED AREA INDICATES THE AREA WHERE PRIVATE SCREENED PERFORMANCES TAKE PLACE

AREA BOUNDED BY THE GREEN LINE INDICATES THE PROVISION OF FIRE ESCAPE

AREA BOUNDED BY THE YELLOW LINE INDICATES THE AREA WHERE PERFORMANCES TAKE PLACE

Easy Design Solutions Studio
EDS 48
 Bachelor Road
 Harrogate
 HG1 3EQ
 grt@easy-designs.co.uk
 mob: 07903730044

Client: **STAR OYSTER**

Project: **THE QUADRANT RE-DEVELOPMENT**

Title: **UNIT 2 LICENSING PLAN**

Floor: **4th FLOOR**

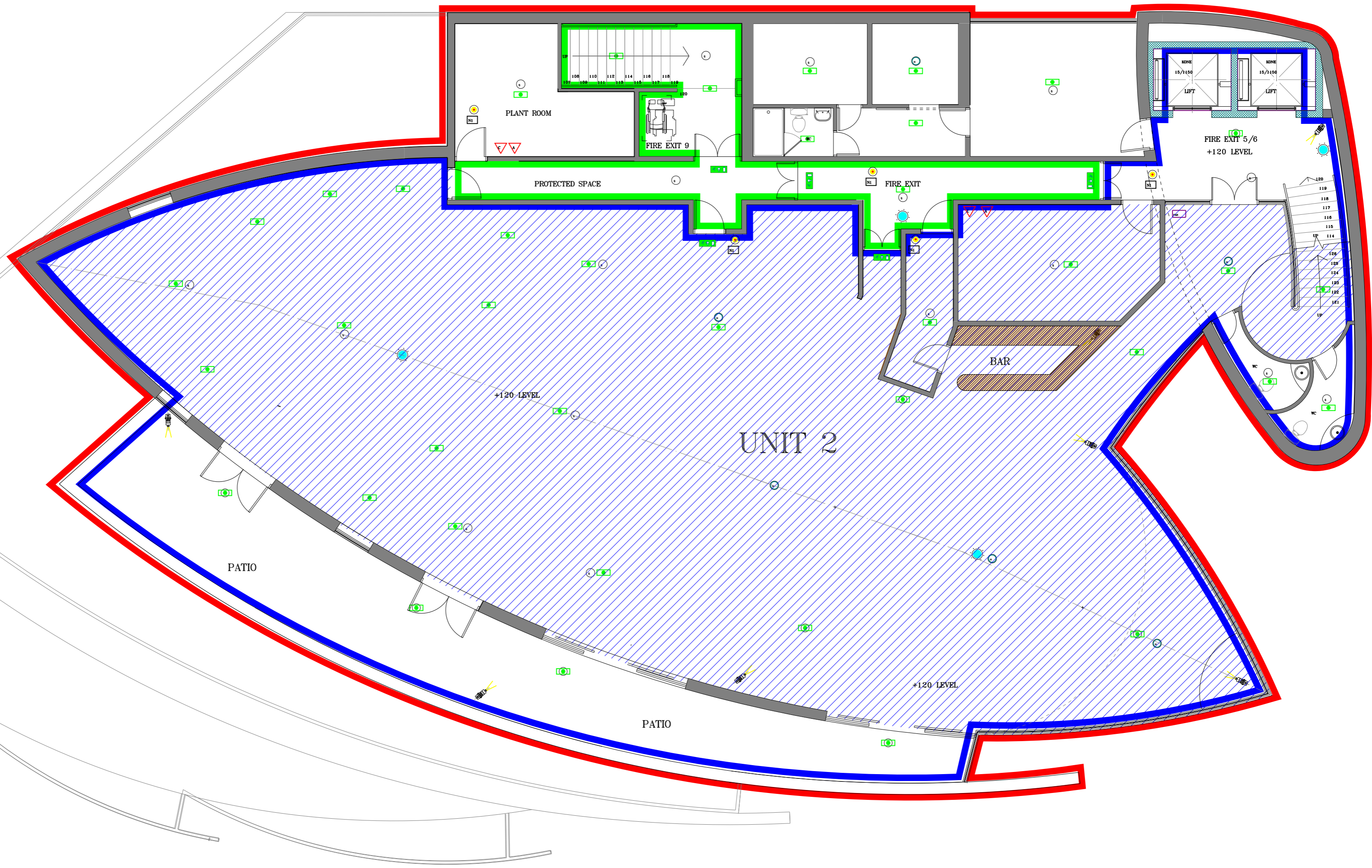
Drawn by: **GRT** Checked by: **GRT** Date: **MAY-15**

Director: **GUILDFORD** Drawing no: **Scale: 1:100@A2**

Proj. No: **EDS**

Project: **ARKEY**

Project ID: **Q13-U2-515C**



5th FLOOR

FIRE SAFETY
 FIRE DETECTION, ALARMS, EXIT SIGNS, MAINTAINED AND NON-MAINTAINED EMERGENCY LIGHTING TO BE INSTALLED IN ACCORDANCE WITH PREMISES LICENSING AND FIRE SAFETY OFFICERS APPROVAL
 GLAZING AND VISION PANELS TO FIRE RATED PARTITIONS AND DOORS TO BE PYROBELL OR SIMILAR TO COMPLY WITH REQUIRED FIRE RATING

FIRE EXTINGUISHERS
 FIRE EXTINGUISHERS AS FOLLOWS TO BE INSTALLED IN ACCORDANCE WITH PREMISES LICENSING AND FIRE OFFICERS APPROVAL AND MAINTAINED, INSPECTED AND TESTED IN ACCORDANCE WITH BRITISH STANDARDS CODE OF PRACTICE
 WATER EXTINGUISHERS (HYDROSPRAY)
 FOAM EXTINGUISHERS
 CARBON DIOXIDE EXTINGUISHERS
 FIRE BLANKET
 POWDER (DRY CHEMICAL) EXTINGUISHERS
 DOC GASGUARD
 GAS SHUT OFF

FIRE EQUIPMENT
 6kg MULTI-PURPOSE FOAM EXTINGUISHER
 FIRE BLANKET
 2kg CARBON DIOXIDE EXTINGUISHER
 AQUARIUS FOAM FILLED
 6 lit MULTI-PURPOSE WATER EXTINGUISHER

FIRE NOTICES
 GENERAL BY EACH CALL POINT
 STAFF
 KITCHEN
 DUTY MANAGER

EMERGENCY LIGHTING
 EMERGENCY LIGHT 240V N/A3 BULKHEAD LIGHT BOH REF AC5000 PUBLIC AREA COMBINE 28 WATT 2D DECORATIVE FITTING
 EMERGENCY SIGN 240V M3
 BOH REF AC5004 PUBLIC AREA AC5019
 EMERGENCY / CLEANERS LIGHT 240V N/A3 IP20 TWIN SPOT WITH MULTI DIRECTIONAL HEADS REF AC5007

FIRE ALARM
 VOID DETECTOR
 SMOKE DETECTOR
 HEAT DETECTOR
 MANUAL CALL POINT
 FIRST STAGE SOUNDER
 FLASHING BEACON
 FIRE ALARM PANEL
 FIRE ALARM REPEATER PANEL
 DISABLE REFUGE INTERCOM POINT

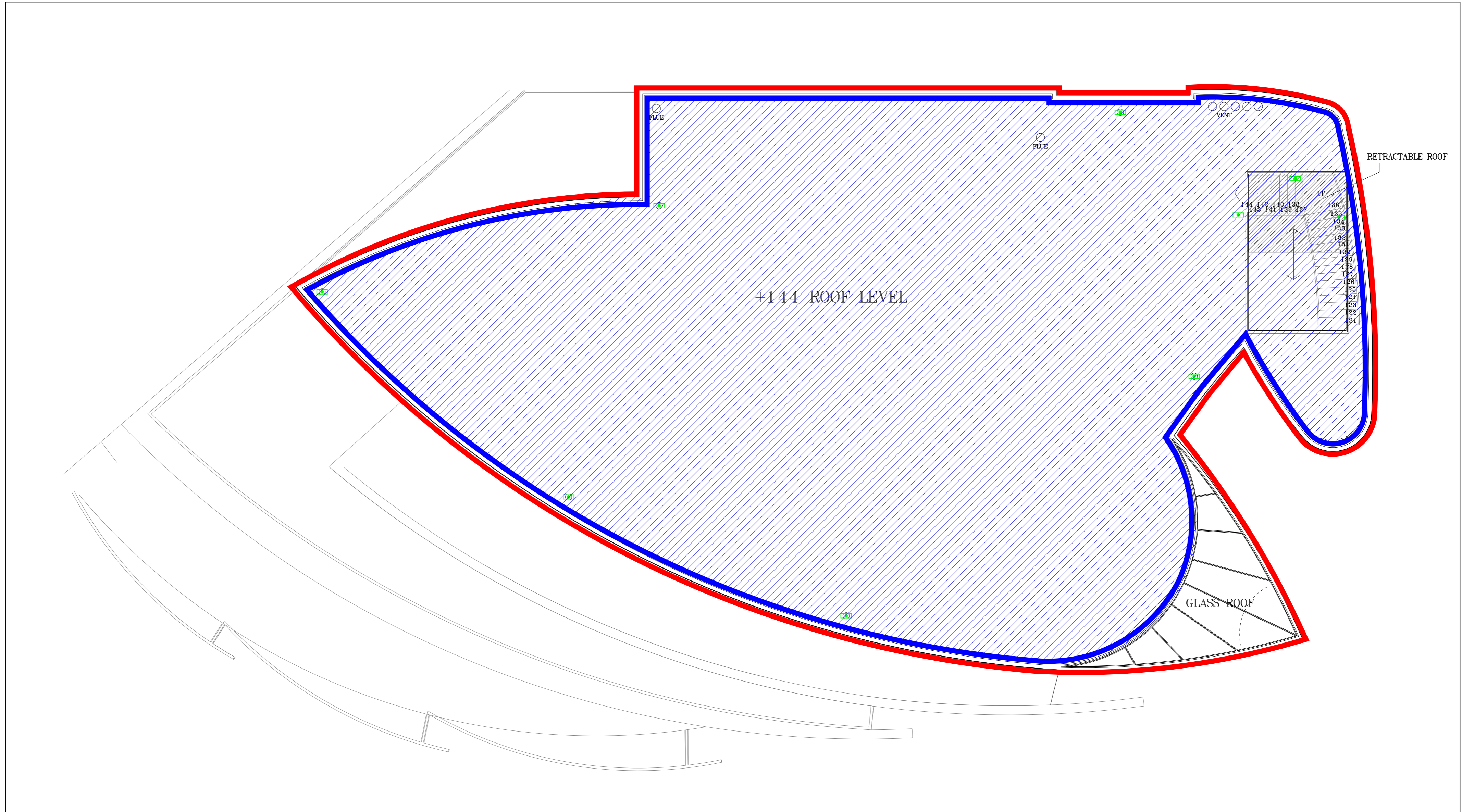
GENERAL KEY
 ATM BANK MACHINE
 MOBILE EXTERNAL HEATER
 CURTAIN
 TEMPORARY PARTITION
 FIXED SHELVING
 BAR COUNTERS AND BACKFITTINGS
 REMOVABLE SCREEN

AREA BOUNDED BY THE RED LINE INDICATES THE BOUNDARY OF THE BUILDING
 AREA BOUNDED BY THE BLUE LINE INDICATES THE PERIMETER OF THE PREMISES
 THE BLUE HATCHED AREA INDICATES THE AREA WHERE PRIVATE SCREENED PERFORMANCES TAKE PLACE

AREA BOUNDED BY THE GREEN LINE INDICATES THE PROVISION OF FIRE ESCAPE
 AREA BOUNDED BY THE YELLOW LINE INDICATES THE AREA WHERE PERFORMANCES TAKE PLACE

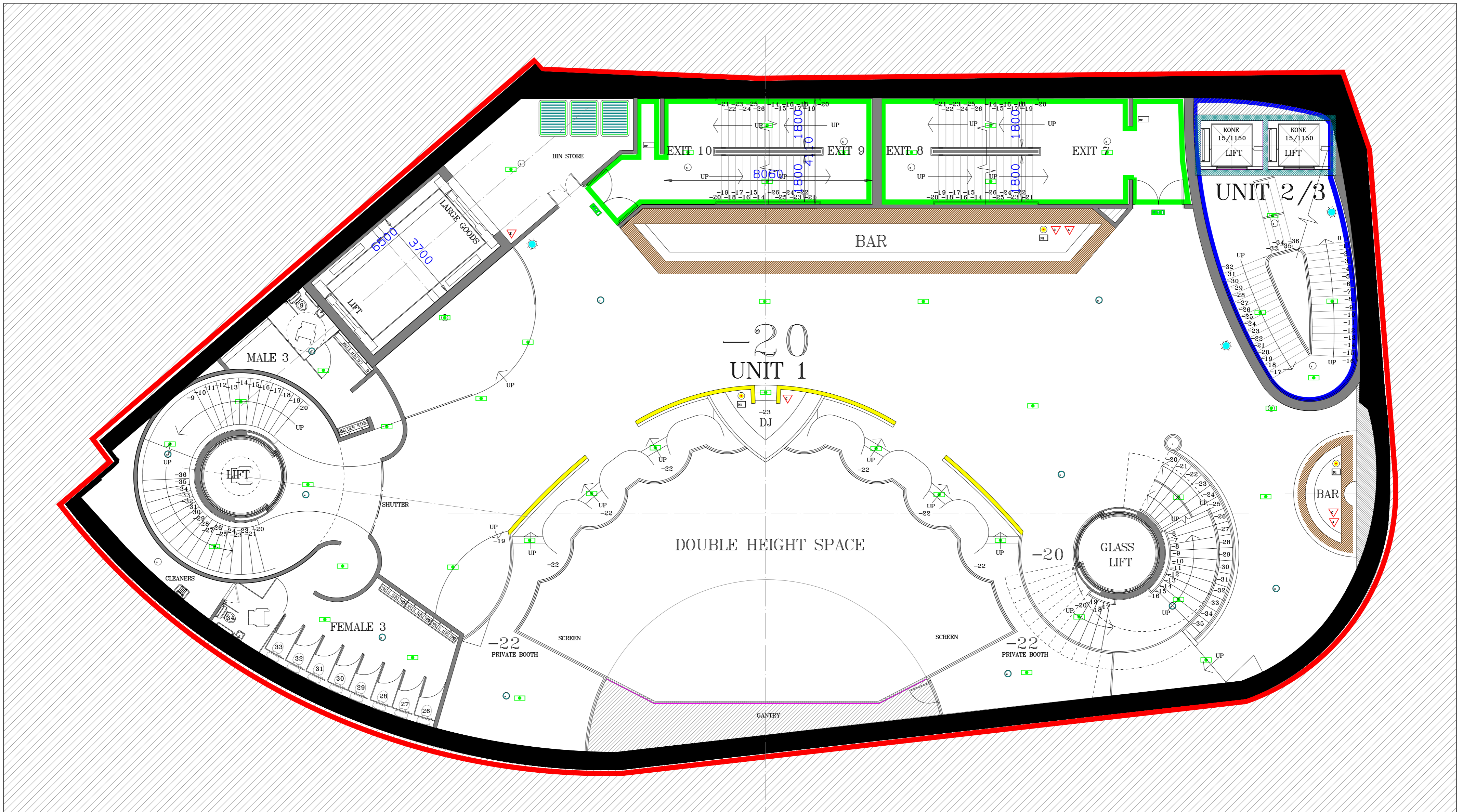
Easy Design Solutions Studio
EDS 48
 Bachelor Road
 Harrogate
 HG1 3EQ
 grt@easy-designs.co.uk
 mob: 07903730044

Client: STAR OYSTER
 Project: THE QUADRANT RE-DEVELOPMENT
 Title: UNIT 2 LICENSING PLAN
 5th FLOOR
 Drawn by: GRT Checked by: GRT Date: MAY-15
 Drawing no: 1:1.00@A2
 Scale: 1:1.00@A2
 Proj. No: ARKEY
 Inset: Q13-U2-516C



ROOF PLAN

<p>FIRE SAFETY FIRE DETECTION, ALARMS, EXIT SIGNS, MAINTAINED AND NON-MAINTAINED EMERGENCY LIGHTING TO BE INSTALLED IN ACCORDANCE WITH PREMISES LICENSING AND FIRE SAFETY OFFICERS APPROVAL GLAZING AND VISION PANELS TO FIRE RATED PARTITIONS AND DOORS TO BE PYROBELL OR SIMILAR TO COMPLY WITH REQUIRED FIRE RATING</p> <p>FIRE EXTINGUISHERS FIRE EXTINGUISHERS AS FOLLOWS TO BE INSTALLED IN ACCORDANCE WITH PREMISES LICENSING AND FIRE OFFICERS APPROVAL AND MAINTAINED, INSPECTED AND TESTED IN ACCORDANCE WITH BRITISH STANDARDS CODE OF PRACTICE WATER EXTINGUISHERS (HYDROSPRAY) FOAM EXTINGUISHERS CARBON DIOXIDE EXTINGUISHERS FIRE BLANKET POWDER (DRY CHEMICAL) EXTINGUISHERS DOC GASGUARD GAS SHUT OFF</p>	<p>FIRE EQUIPMENT</p> <ul style="list-style-type: none"> ▽ 6kg MULTI-PURPOSE FOAM EXTINGUISHER ▽ FIRE BLANKET ▽ 2kg CARBON DIOXIDE EXTINGUISHER ▽ AQUAFIX FOAM FILLED ▽ 6 ltr MULTI-PURPOSE WATER EXTINGUISHER <p>FIRE NOTICES</p> <ul style="list-style-type: none"> □ GENERAL BY EACH CALL POINT □ STAFF □ KITCHEN □ DUTY MANAGER 	<p>EMERGENCY LIGHTING</p> <ul style="list-style-type: none"> □ EMERGENCY LIGHT 240V N/A3 BULKHEAD LIGHT BOH REF AC5000 PUBLIC AREA COMBINE 28 WATT 2D DECORATIVE FITTING □ EMERGENCY SIGN 240V M3 □ BOH REF AC5004 PUBLIC AREA AC5019 □ EMERGENCY / CLEANERS LIGHT 240V N/A3 IP20 TWIN SPOT WITH MULTI DIRECTIONAL HEADS REF AC5007 	<p>FIRE ALARM</p> <ul style="list-style-type: none"> ○ VOID DETECTOR ○ SMOKE DETECTOR ○ HEAT DETECTOR ○ MANUAL CALL POINT ○ FIRST STAGE SOUNDER ○ FLASHING BEACON ○ FIRE ALARM PANEL ○ FIRE ALARM REPEATER PANEL ○ DISABLE REFUGE INTERCOM POINT 	<p>GENERAL KEY</p> <ul style="list-style-type: none"> ATM BANK MACHINE MOBILE EXTERNAL HEATER CURTAIN TEMPORARY PARTITION FIXED SHELVING BAR COUNTERS AND BACKFITTINGS REMOVABLE SCREEN 	<p>AREA BOUNDED BY THE RED LINE INDICATES THE BOUNDARY OF THE BUILDING</p> <p>AREA BOUNDED BY THE BLUE LINE INDICATES THE PERIMETER OF THE PREMISES</p> <p>THE BLUE HATCHED AREA INDICATES THE AREA WHERE PRIVATE SCREENED PERFORMANCES TAKE PLACE</p>	<p>AREA BOUNDED BY THE GREEN LINE INDICATES THE PROVISION OF FIRE ESCAPE</p> <p>AREA BOUNDED BY THE YELLOW LINE INDICATES THE AREA WHERE PERFORMANCES TAKE PLACE</p>	<p>Easy Design Solutions Studio EDS 48 Bachelor Road Harrogate HG1 3EQ grt@easy-designs.co.uk mob: 07903730044</p>	<p>Client: STAR OYSTER Project: THE QUADRANT RE=DEVELOPMENT Title: UNIT 2 LICENSING PLAN ROOF PLAN</p> <p>Drawn by: GRT Checked by: GRT Date: OCT-13 Drawing no: EDS Scale: 1:100@A2 Proj. no: ARKEY Drawing no: Q13-U2-517C</p>
--	--	--	--	---	--	--	--	--



UPPER BASEMENT MEZZANINE

FIRE SAFETY

FIRE DETECTION, ALARMS, EXIT SIGNS, MAINTAINED AND NON-MAINTAINED EMERGENCY LIGHTING TO BE INSTALLED IN ACCORDANCE WITH PREMISES LICENSING AND FIRE SAFETY OFFICER APPROVAL. GLAZING AND VISION PANELS TO FIRE RATED PARTITIONS AND DOORS TO BE PYROBELL OR SIMILAR TO COMPLY WITH REQUIRED FIRE RATING.

FIRE EXTINGUISHERS

FIRE EXTINGUISHERS AS FOLLOWS TO BE INSTALLED IN ACCORDANCE WITH PREMISES LICENSING AND FIRE OFFICERS APPROVAL AND MAINTAINED, INSPECTED AND TESTED IN ACCORDANCE WITH BRITISH STANDARDS CODE OF PRACTICE. WATER EXTINGUISHERS (HYDROSPRAY) FOAM EXTINGUISHERS CARBON DIOXIDE EXTINGUISHERS FIRE BLANKET POWDER (DRY CHEMICAL) EXTINGUISHERS BOC GASGUARD GAS SHUT OFF

FIRE EQUIPMENT

- ▽ 6kg MULTI-PURPOSE FOAM EXTINGUISHER
- ▽ FIRE BLANKET
- ▽ 2kg CARBON DIOXIDE EXTINGUISHER
- ▽ AQUAFIX FOAM FILLED
- ▽ 6 lit MULTI-PURPOSE WATER EXTINGUISHER

FIRE NOTICES

- GENERAL BY EACH CALL POINT
- STAFF
- KITCHEN
- DUTY MANAGER

EMERGENCY LIGHTING

- EMERGENCY LIGHT 240V N/A3 BULKHEAD LIGHT 80H REF AC5000 PUBLIC AREA COMBINE 28 WATT 2D DECORATIVE FITTING
- EMERGENCY SIGN 240V M3
- BOH REF AC5004 PUBLIC AREA AC5019
- EMERGENCY / CLEANERS LIGHT 240V N/A3 IP20 TWIN SPOT WITH MULTI DIRECTIONAL HEADS REF AC5007

FIRE ALARM

- VOID DETECTOR
- SMOKE DETECTOR
- HEAT DETECTOR
- MANUAL CALL POINT
- FIRST STAGE SOUNDER
- FLASHING BEACON
- FIRE ALARM PANEL
- FIRE ALARM REPEATER PANEL
- DISABLE REFUGE INTERCOM POINT

GENERAL KEY

- ATM BANK MACHINE
- MOBILE EXTERNAL HEATER
- CURTAIN
- TEMPORARY PARTITION
- FIXED SHELVING
- BAR COUNTERS AND BACKFITTINGS
- REMOVABLE SCREEN

AREA BOUNDED BY THE RED LINE INDICATES THE BOUNDARY OF THE BUILDING

AREA BOUNDED BY THE BLUE LINE INDICATES THE PERIMETER OF THE PREMISES

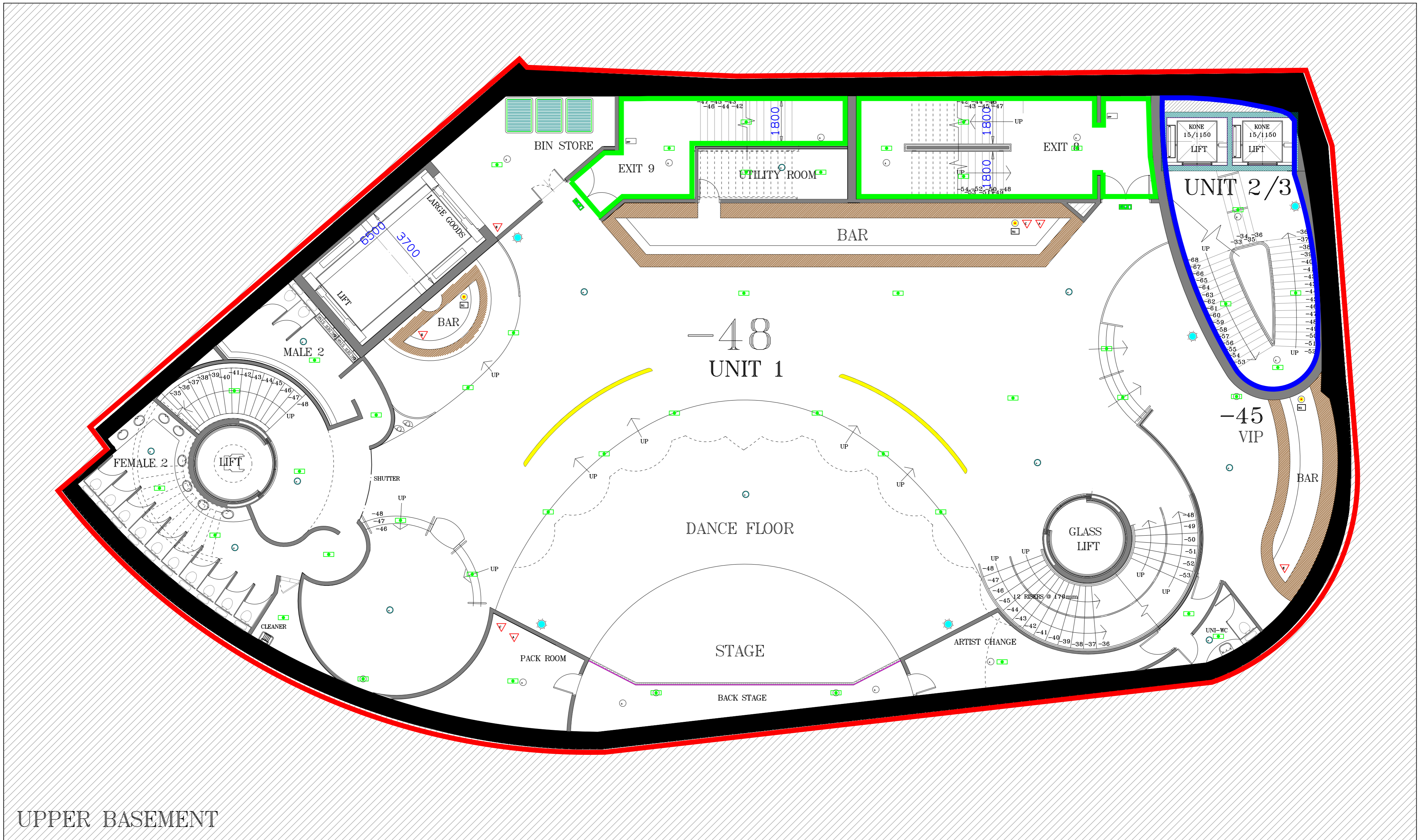
THE BLUE HATCHED AREA INDICATES THE AREA WHERE PRIVATE SCREENED PERFORMANCES TAKE PLACE

AREA BOUNDED BY THE GREEN LINE INDICATES THE PROVISION OF FIRE ESCAPE

AREA BOUNDED BY THE YELLOW LINE INDICATES THE AREA WHERE PERFORMANCES TAKE PLACE

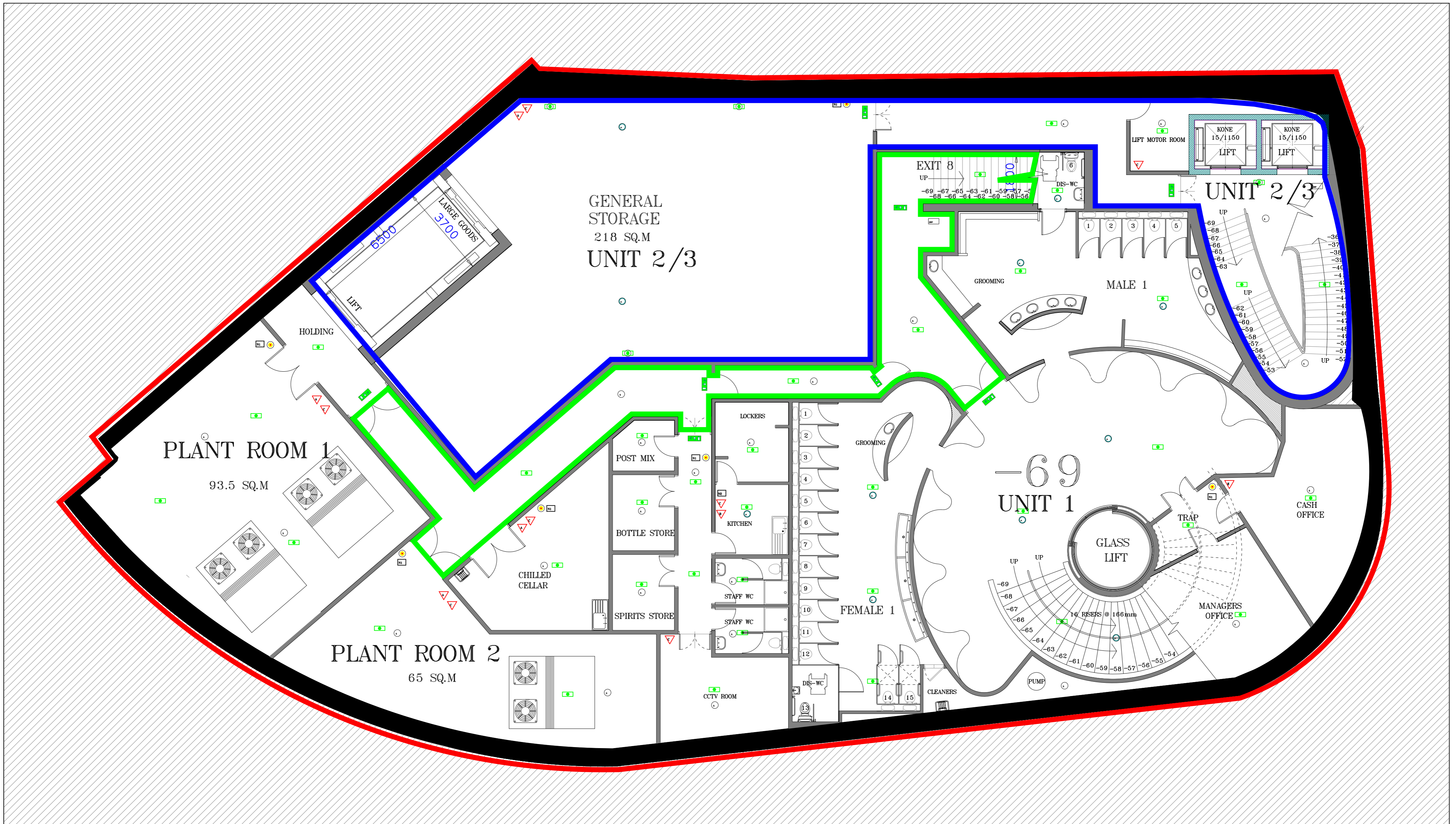
Easy Design Solutions Studio
EDS 48
 Bachelor Road
 Harrogate
 HG1 3EQ
 grt@easy-designs.co.uk
 mob: 07903730044

Client: STAR OYSTER
 Project: THE QUADRANT RE-DEVELOPMENT
 Title: UNIT 2 LICENSING PLAN UPPER BASEMENT MEZZANINE
 Drawn by: GRT Checked by: GRT Date: OCT-13
 Scale: 1:100@A2
 Drawing no: ARKEY
 Proj. No: Q13-U2-518C



UPPER BASEMENT

<p>FIRE SAFETY FIRE DETECTION, ALARMS, EXIT SIGNS, MAINTAINED AND NON-MAINTAINED EMERGENCY LIGHTING TO BE INSTALLED IN ACCORDANCE WITH PREMISES LICENSING AND FIRE SAFETY OFFICER APPROVAL. GLAZING AND VISION PANELS TO FIRE RATED PARTITIONS AND DOORS TO BE PYROBELL OR SIMILAR TO COMPLY WITH REQUIRED FIRE RATING.</p> <p>FIRE EXTINGUISHERS FIRE EXTINGUISHERS AS FOLLOWS TO BE INSTALLED IN ACCORDANCE WITH PREMISES LICENSING AND FIRE OFFICERS APPROVAL AND MAINTAINED, INSPECTED AND TESTED IN ACCORDANCE WITH BRITISH STANDARDS CODE OF PRACTICE. WATER EXTINGUISHERS (HYDROSPRAY) FOAM EXTINGUISHERS CARBON DIOXIDE EXTINGUISHERS FIRE BLANKET POWDER (DRY CHEMICAL) EXTINGUISHERS BOC GASGUARD GAS SHUT OFF</p>	<p>FIRE EQUIPMENT</p> <ul style="list-style-type: none"> 6kg MULTI-PURPOSE FOAM EXTINGUISHER FIRE BLANKET 2kg CARBON DIOXIDE EXTINGUISHER AQUARIUS FOAM FILLED 6 lit MULTI-PURPOSE WATER EXTINGUISHER <p>FIRE NOTICES</p> <ul style="list-style-type: none"> GENERAL BY EACH CALL POINT STAFF KITCHEN DUTY MANAGER 	<p>EMERGENCY LIGHTING</p> <ul style="list-style-type: none"> EMERGENCY LIGHT 240V N/A3 BULBHEAD LIGHT BOH REF AC5000 PUBLIC AREA COMBINE 28 WATT 2D DECORATIVE FITTING EMERGENCY SIGN 240V M3 BOH REF AC5004 PUBLIC AREA AC5019 EMERGENCY / CLEANERS LIGHT 240V N/A3 IP20 TWIN SPOT WITH MULTI DIRECTIONAL HEADS REF AC5007 	<p>FIRE ALARM</p> <ul style="list-style-type: none"> VOID DETECTOR SMOKE DETECTOR HEAT DETECTOR MANUAL CALL POINT FIRST STAGE SOUNDER FLASHING BEACON FIRE ALARM PANEL FIRE ALARM REPEATER PANEL DISABLE REFUGE INTERCOM POINT 	<p>GENERAL KEY</p> <ul style="list-style-type: none"> ATM BANK MACHINE MOBILE EXTERNAL HEATER CURTAIN TEMPORARY PARTITION FIXED SHIELDING BAR COUNTERS AND BACKFITTINGS REMOVABLE SCREEN 	<p>AREA BOUNDED BY THE RED LINE INDICATES THE BOUNDARY OF THE BUILDING</p> <p>AREA BOUNDED BY THE BLUE LINE INDICATES THE PERIMETER OF THE PREMISES</p> <p>THE BLUE HATCHED AREA INDICATES THE AREA WHERE PRIVATE SCREENED PERFORMANCES TAKE PLACE</p>	<p>AREA BOUNDED BY THE GREEN LINE INDICATES THE PROVISION OF FIRE ESCAPE</p> <p>AREA BOUNDED BY THE YELLOW LINE INDICATES THE AREA WHERE PERFORMANCES TAKE PLACE</p>	<p>Easy Design Solutions Studio EDS 48 Bachelor Road Harrogate HG1 3EQ grt@easy-designs.co.uk mob: 07903730044</p>	<p>Client: STAR OYSTER Project: THE QUADRANT RE-DEVELOPMENT Title: UNIT 2 LICENSING PLAN UPPER BASEMENT</p> <p>Drawn by: GRT Checked by: GRT Date: OCT-13 Drawing no: Scale: 1:100@A2 Project: ARKEY Job no: Q13-U2-519C</p>
--	---	--	--	--	--	--	--	--



LOWER BASEMENT

<p>FIRE SAFETY FIRE DETECTION, ALARMS, EXIT SIGNS, MAINTAINED AND NON-MAINTAINED EMERGENCY LIGHTING TO BE INSTALLED IN ACCORDANCE WITH PREMISES LICENSING AND FIRE SAFETY OFFICE APPROVAL. GLAZING AND VISION PANELS TO FIRE RATED PARTITIONS AND DOORS TO BE PYROBELL OR SIMILAR TO COMPLY WITH REQUIRED FIRE RATING.</p> <p>FIRE EXTINGUISHERS FIRE EXTINGUISHERS AS FOLLOWS TO BE INSTALLED IN ACCORDANCE WITH PREMISES LICENSING AND FIRE OFFICERS APPROVAL AND MAINTAINED, INSPECTED AND TESTED IN ACCORDANCE WITH BRITISH STANDARDS CODE OF PRACTICE. WATER EXTINGUISHERS (HYDROSPRAY) FOAM EXTINGUISHERS CARBON DIOXIDE EXTINGUISHERS FIRE BLANKET POWDER (DRY CHEMICAL) EXTINGUISHERS BOC GASGUARD GAS SHUT OFF</p>	<p>FIRE EQUIPMENT</p> <ul style="list-style-type: none"> ▽ 6kg MULTI-PURPOSE FOAM EXTINGUISHER ▽ FIRE BLANKET ▽ 2kg CARBON DIOXIDE EXTINGUISHER ▽ AQUARIUS FOAM FILLED ▽ 6 ltr MULTI-PURPOSE WATER EXTINGUISHER <p>FIRE NOTICES</p> <ul style="list-style-type: none"> □ GENERAL BY EACH CALL POINT □ STAFF □ KITCHEN □ DUTY MANAGER 	<p>EMERGENCY LIGHTING</p> <ul style="list-style-type: none"> □ EMERGENCY LIGHT 240V N/A3 BULKHEAD LIGHT BOH REF AC5000 PUBLIC AREA COMBINE 28 WATT 2D DECORATIVE FITTING □ EMERGENCY SIGN 240V M3 □ BOH REF AC5004 PUBLIC AREA AC5019 □ EMERGENCY / CLEANERS LIGHT 240V N/A3 IP20 TWIN SPOT WITH MULTI DIRECTIONAL HEADS REF AC5007 	<p>FIRE ALARM</p> <ul style="list-style-type: none"> ○ VOID DETECTOR ○ SMOKE DETECTOR ○ HEAT DETECTOR ○ MANUAL CALL POINT ○ FIRST STAGE SOUNDER ○ FLASHING BEACON ○ FIRE ALARM PANEL ○ FIRE ALARM REPEATER PANEL ○ DISABLE REFUGE INTERCOM POINT 	<p>GENERAL KEY</p> <ul style="list-style-type: none"> ATM BANK MACHINE MOBILE EXTERNAL HEATER CURTAIN TEMPORARY PARTITION FIXED SHIELDING BAR COUNTERS AND BACKFITTINGS REMOVABLE SCREEN 	<ul style="list-style-type: none"> AREA BOUNDED BY THE RED LINE INDICATES THE BOUNDARY OF THE BUILDING AREA BOUNDED BY THE BLUE LINE INDICATES THE PERIMETER OF THE PREMISES THE BLUE HATCHED AREA INDICATES THE AREA WHERE PRIVATE SCREENED PERFORMANCES TAKE PLACE 	<ul style="list-style-type: none"> AREA BOUNDED BY THE GREEN LINE INDICATES THE PROVISION OF FIRE ESCAPE AREA BOUNDED BY THE YELLOW LINE INDICATES THE AREA WHERE PERFORMANCES TAKE PLACE 	<p>Easy Design Solutions Studio EDS 48 Bachelor Road Harrogate HG1 3EQ grt@easy-designs.co.uk mob: 07903730044</p>	<p>Client: STAR OYSTER Project: THE QUADRANT RE-DEVELOPMENT Title: UNIT 2 LICENSING PLAN LOWER BASEMENT</p> <p>Drawn by: GRT Checked by: GRT Date: OCT-13 Scale: 1:100@A2</p> <p>Director: GUILDFORD Proj Name: EDS Proj No: ARKEY Drawing no: Q13-U2-520C</p>
---	---	--	--	--	---	---	--	--